

# Weeth Lane

Camborne, Cornwall, TR14

£695 pcm



## Details in brief

Available Date: 02/12/2024

Deposit: £1

Bedrooms:

Bathrooms:

Length of Tenancy: N/A

Furnishing:

Type of building: Commercial

## Upad.co.uk

Telephone: 02037506355

Email: info@upad.co.uk

## Full features

- Recently fitted out office space
- Designated car parking
- Kitchen, Toilets and Shower
- Quality economical heating
- High speed secure fiber included
- Secure site with full CCTV included
- Fully fitted kitchen with dishwasher

## Full description

Newly fitted out office, with great location within walking distance to the centre of Camborne, the site used to be the location of the former Camborne fire and rescue station Property comprises: Office Versatile newly fitted out office space 4.4m x 3.6m (approx) Road frontage Front: Large new white double glazed windows Secure new ash veneer door Great lighting with natural light with large window and new energy efficient lighting 2 walls with dado trunking and electric plugs and network connections Private secure wifi Expensive cost efficient heating Cost efficient metered electric Emergency lighting Intercom to entrance Communal space comprises of: Disabled toilet Disabled toilet with all sundries included (electric hand driers, soap etc.) Kitchen area Newly fitted kitchen Washing machine Fridge Microwave Plates/dishes/cutlery Additional: Full CCTV around site,

# Weeth Lane

Camborne, Cornwall, TR14

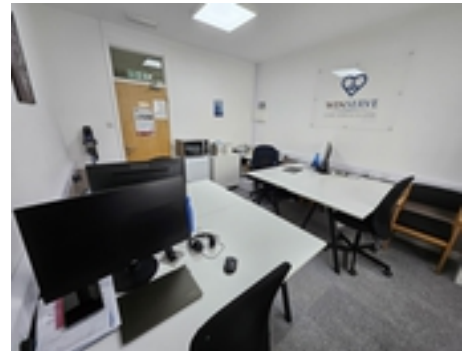
£695 pcm

accessible by PC or mobile device Signage directory at Entrance and Site Painting & Decoration of the external of the property External lighting Communal Fire Risk Assessment Maintenance of Fire Extinguisher Maintenance of Fire Alarm Site bins (fair usage policy applies) Broadband speeds – the property benefits of FIBRE to the property speeds achievable are in excess of 900 mb connection. Local transport Bus stop – 2 minutes' walk Train station – 10 minutes walk Airport – 45 minutes by car

# Weeth Lane

Camborne, Cornwall, TR14

£695 pcm



PLEASE NOTE: In accordance with the Property Misdescriptions Act (1991) we have prepared this information as a general guide to the property. It is not intended to form part of any offer or contract. We have not carried out a structural survey and any fittings, appliances and services mentioned have not been tested. All photographs and floorplans are given as a guide only and should not be relied upon for the purchase of any furnishings.